



## Thomas Allen Hartwig

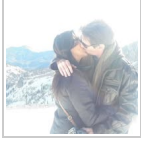
October 5, 1963 - March 29, 2024

Thomas Allen Hartwig, lovingly known as Tom or Tommy, was born October 5, 1963, and passed away March 29, 2024. He grew up in Rockford, Illinois on a large farm located on the corner of Linden and Perryville Roads. Tom was a loving and caring individual that loved the Lord and his music. Tom was an accomplished musician who never took a music lesson or read music. He began playing music by ear in his grandmother's living room on a piano. He would listen to music on the radio and play it back note for note. He was a rare talent. Tom played in a few different music bands and won a battle of the band's competition one year with a group from Rockford. Tom's faith in God was a priority and he will be greatly missing by all he came to know throughout the years. He will especially be missed by his family, but it is a comfort knowing Tom has now gone to be with the Lord in Heaven. He will be laid to rest at Monroe Center Cemetery, Monroe Center, Illinois, Ogle County. Tom is preceded in death by paternal grandparents; Oscar & Myrtle Hartwig, maternal grandparents; Duane & Lola Wilson, father; Wayne F. Hartwig and his sister; Susan M. Hartwig. He is survived by mother; Anita J. Rowl, sister; Sandra K. Hartwig & brother; Steven W. (Jo Lynn) Hartwig Sr.

We love you and will miss you son, brother, and friend.

Burns Funeral Home Hobart, Indiana entrusted with arrangements. [www.BurnsFuneral.com](http://www.BurnsFuneral.com)

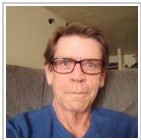
# Tribute Wall



“ *The very friend the Savior talked about being Tommy was. Always on the bright side when things looked down. Always encouragement when life seemed hopeless. I was one of the lucky ones to call him friend and instead he was a brother. See you soon Tommy in the Celestial realm in the heavens.*

---

**Rick Reynolds** - April 20, 2024 at 06:13 PM



“ *I am grateful to have known Tommy. We had a mutual love of Rush and other bands.*

---

**David Blanck** - April 16, 2024 at 06:24 PM